

測試報告 Test Report

號碼(No.) : CT/2016/61119

日期(Date) : 2016/07/05

頁數(Page) : 1 of 3

LUDAVI, INC.

13484 HOLIDAY DRIVE, SARATOGA, CA 95070, U. S. A.



以下測試樣品係由申請廠商所提供及確認 (The following sample(s) was/were submitted and identified by/on behalf of the applicant as) :

送樣廠商(Sample Submitted By) : 路達威國際有限公司 (LUDAVI INTERNATIONAL CORP.)
樣品名稱(Sample Description) : LUDAVI WATER BOTTLE LID (LUDAVI 鑽石水瓶瓶蓋)
樣品材質(Sample Material) : PP
原產國(Country of Origin) : TAIWAN
收件日期(Sample Receiving Date) : 2016/06/28
測試期間(Testing Period) : 2016/06/28 TO 2016/07/05

=====
測試需求(Test Requested) : 依據客戶指定, 參考德國於2005年9月1日公告的食品、日用品及飼料法(LFGB)第30條與第31條及其修訂案, 歐盟(EC) No. 1935/2004、No. 10/2011及其修訂案、BfR recommendation進行測試。 測試項目請參閱測試結果表格。(As specified by client, the sample(s) was/were tested with reference to German Food, Articles of Daily Use and Feed Code of September 1, 2005 (LFGB), Section 30 & 31 with amendments, European Commission Regulation (EC) No. 1935/2004, No. 10/2011 with amendments and BfR recommendation. Please refer to result table for testing item(s).)

測試結果(Test Results) : 請見下一頁 (Please refer to next pages).


Singh Hsiu / Supervisor
Signed for and on behalf of
SGS TAIWAN LTD.
Chemical Laboratory - Taipei



測試報告

Test Report

號碼(No.) : CT/2016/61119

日期(Date) : 2016/07/05

頁數(Page) : 2 of 3

LUDAVI, INC.

13484 HOLIDAY DRIVE, SARATOGA, CA 95070, U. S. A.



測試結果(Test Results)

測試部位(PART NAME)No.1 : 粉紅色塑膠 (PINK PLASTIC)

通過(PASS)

測試項目 (Test Items)	單位 (Unit)	測試方法 (Method)	方法偵測 極限值 (MDL)	結果 (Result)	限值 (Limit)
				No. 1	
雙酚A / Bisphenol A	mg/kg	參考Part II Section D2 of Testing Methods for Foodstuffs, Implements, Containers and Packaging, Toys, Detergents, JETRO, Japan External Trade Organization, 2009. 以超高效能液相層析串聯質譜儀分析。 / With reference to Part II Section D2 of Testing Methods for Foodstuffs, Implements, Containers and Packaging, Toys, Detergents, JETRO, Japan External Trade Organization, 2009. Analysis was performed by UPLC-MS/MS.	0.1	n. d.	Prohibited

Remark :

- 限值是參考Commission Implementing Regulation (EU) 321/2011 amending Regulation (EU) 10/2011 of 14 January 2011. / Limit is with reference to Commission Implementing Regulation (EU) 321/2011 amending Regulation (EU) 10/2011 of 14 January 2011.

備註(Note) :

1. mg/kg = ppm ;
2. n. d. = Not Detected (未檢出)
3. MDL = Method Detection Limit (方法偵測極限值)

測試報告 Test Report

號碼(No.) : CT/2016/61119

日期(Date) : 2016/07/05

頁數(Page) : 3 of 3

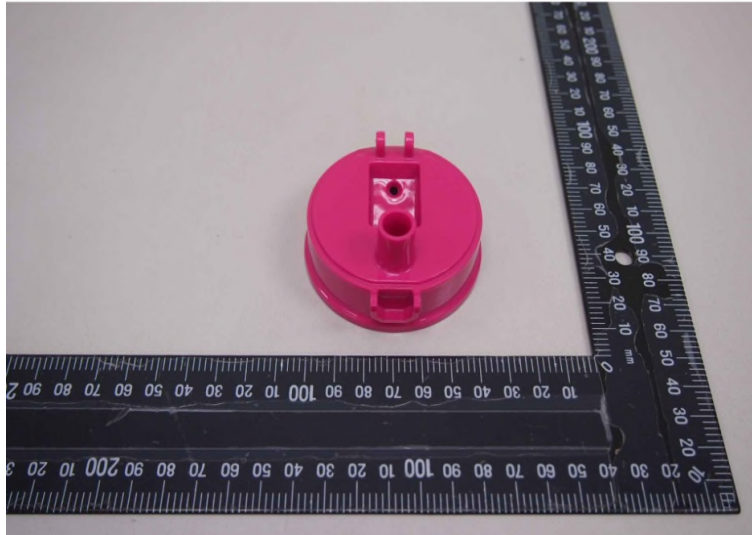
LUDAVI, INC.

13484 HOLIDAY DRIVE, SARATOGA, CA 95070, U. S. A.



* 照片中如有箭頭標示，則表示為實際檢測之樣品/部位。*
(The tested sample / part is marked by an arrow if it's shown on the photo.)

CT/2016/61119



** 報告結尾 (End of Report) **